

# **SEQMS Procedure**

Pollution Incident Reponse Plan  
Bituminous Products Revesby  
Plant

BP REV 9 PL\_PIRMP 210.9.7



### APPROVAL

The signatures below certify that this SEQMS procedure has been reviewed and accepted, and demonstrates that the signatories are aware of all the requirements contained herein and are committed to ensuring their provision.

	Name	Signature	Position	Date
Prepared by	Roger Rich	<i>Roger Rich</i>	National Facilities Manager	17/08/2021
Reviewed by	Glenn Brayley		Maintenance Coordinator NSW	17/08/2021
Approved by	Bevan Ford		Director	17/08/2021

### AMENDMENT RECORD

This SEQMS procedure is reviewed to ensure its continuing relevance to the systems and process that it describes. A record of contextual additions or omissions is given below:

Page No.	Context	Revision	Date
All	BP COR PL 0023 1 has been replaced using the revised new format and compliance to the latest versions of ISO9001, ISO14001 & ISO45001	6	03/05/2018
All	Remove any reference to MD. MD role not replaced. Company Director, responsible for approval of procedures. Remove reference to MD. Change WHSE Coordinator to Maintenance Coordinator. Change TDM to National Technical Manager.	7	10/09/2019
5 and 6	Update notification protocol and company emergency contacts	7	10/09/2019
14	Update chemical manifest	7	10/09/2019
6	Update Notification Protocol	8	
20	Remove reference to Billabong Water		13/10/2020
15	Chemical Manifest	9	17/08/2021

### COMPANY PROPRIETARY INFORMATION

The electronic version of this procedure is the latest revision. It is the responsibility of the individual to ensure that any paper material is the current revision. The printed version of this manual is uncontrolled, except when provided with a document reference number and revision in the field below:

Document Ref.	BP REV PL_PIRMP 210.9.2		Rev	9
Uncontrolled Copy	<input checked="" type="checkbox"/>	Controlled Copy	<input type="checkbox"/>	Date 17/08/2021



### Table of Contents

<b>1. Control of Emergency Situations.....</b>	<b>3</b>
1.1 Introduction and Purpose.....	3
1.2 Process Activity Map.....	3
1.2.1 References.....	4
1.2.2 Terms and Definitions.....	4
1.3 NSW EPA Protection of the Environment Operations Act.....	5
1.4 Emergency Situations - Pollution Incidents.....	5
1.4.1 General.....	5
1.4.2 Notification Protocol.....	5
1.4.3 Contact Details.....	6
1.5 Environmental and Safety Aspects and Impacts.....	7
1.5.1 General.....	7
1.5.2 Environmental and Safety Aspects and Impacts Register.....	8
1.5.3 Inventory of Pollutants.....	14
1.5.4 Safety Equipment.....	18
1.5.5 Communicating with Neighbours and the Local Community.....	18
1.5.6 Minimising Harm to Persons on the Premises.....	19
1.5.7 Maps.....	20
1.5.8 Actions to be Taken Immediately After a Pollution Incident.....	22
1.5.9 Staff Training & Testing Plans.....	24
1.6 Forms and Records.....	25

# 1 Control of Emergency Situations

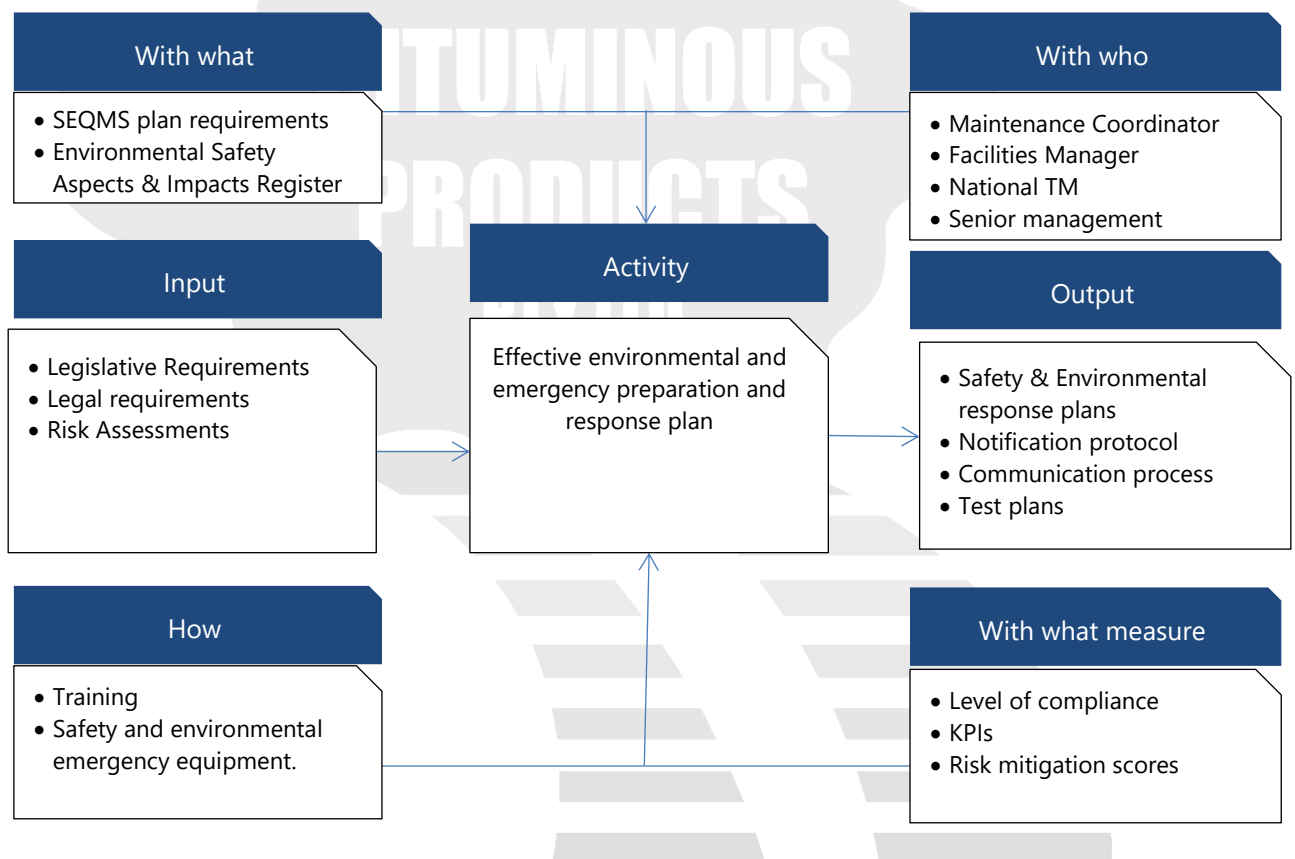
## 1.1 Introduction & Purpose

The purpose of this procedure is to provide a plan for controlling incidents that may cause pollution of the environment. Despite our organisation's best efforts, emergency situations could occur, and therefore an effective preparation plan and response can reduce, prevent or minimise environmental impacts.

The objectives of the PIRMP are to;

- I. Ensure timely and comprehensive communication is provided to staff, the EPA, Ministry of Health, WorkCover NSW, Local Council and NSW Fire and Rescue.
- II. Minimise and control the risk of a pollution incident by identifying the risks, development of plans and implementation of those plans to mitigate the risk of pollution.
- III. Training of Staff to ensure correct implementation and the regular procedural and review of the PIRMP.

## 1.2 Process Activity Map





### 1.2.1 References

Standard	Title	Description
ISO 9000:2015	Quality management systems	Fundamentals and vocabulary
ISO 9001:2015	Quality management systems	Requirements
ISO 14001:2015	Environmental management systems	Requirements
ISO45001:2018	Occupational health and safety management systems - Requirements with guidance for use	Requirements
NSW EPA Environmental Guidelines	Preparation of Incident Response Management Plans	Requirements

### 1.2.2 Terms & Definitions

Term	Definition
Documented Information	Information required to be controlled and maintained
Incident	A work-related event in which an adverse event has occurred, or could have occurred
Emergency	An unforeseen incident that requires immediate action to mitigate threats
NSW EPA	Environment Protection Environment
POELA Act	Protection of the Environment Legislation Amendment Act
POEO Act	Protection of the Environment Operations Act
Pollution	An incident or set of circumstances during or as a consequence of which there is or is likely to be a leak, spill or other escape or deposit of a substance, as a result of which pollution has occurred, is occurring or is likely to occur. It includes an incident or set of circumstances in which a substance has been placed or disposed of on premises, but it does not include an incident or set of circumstances involving only the emission of any noise.
PIRMP	Pollution Incident Response Management Plan. A PIRMP must be in the form required by the regulations and must include the information detailed in the POEO Act (section 153C) and the General Regulation (clause 98C).
National Facilities Manager	In the context of this procedure, the National Facilities Manager is the 2 <sup>nd</sup> point of contact for emergency environmental situations & is responsible for the coordination of the Facilities Team.
National Technical Manager (TM)	National TM. Overall responsibility for compliance to ISO9001, ISO14001 & ISO45001.
SMT	Senior Manager Team. Consists of 2 Company Directors actively responsible for day to day operations of the company.
Maintenance Coordinator NSW	In the context of this procedure, forms part of the Facilities Team and involved in the consultation process during Emergency Environmental situations.

### 1.3 NSW EPA Protection of the Environment Operations Act (POEO)

A pollution incident is required to be notified if there is a risk of 'material harm to the environment', which is defined in section 147 of the POEO Act as:

- (a) Harm to the environment is material if:
  - (I) It involves actual or potential harm to the health or safety of human beings or to ecosystems that is not trivial, or
  - (II) It results in actual or potential loss or property damage of an amount, or amounts in aggregate, exceeding \$10,000 (or such other amount as is prescribed by the regulations), and
- (b) Loss includes the reasonable costs and expenses that would be incurred in taking all reasonable and practicable measures to prevent, mitigate or make good harm to the environment.

The Protection of the Environment Legislation Amendment Act (POELA Act) was introduced in 2011 obligating companies to prepare and implement a pollution incident response management plan.

### 1.4 Emergency Situations - Pollution Incidents

#### 1.4.1 General

Industry is now required to report pollution incidents **immediately** to ALL regulatory bodies.

**Call 000 if the incident presents an immediate threat to human health or property.**

If the incident does not require an initial combat agency, or once the 000 call has been made, notify the Director to contact the remaining authorities listed below.

**Cleanaway Spill response may also be called on 1800 SPILLS (1800 774 557), if required.**

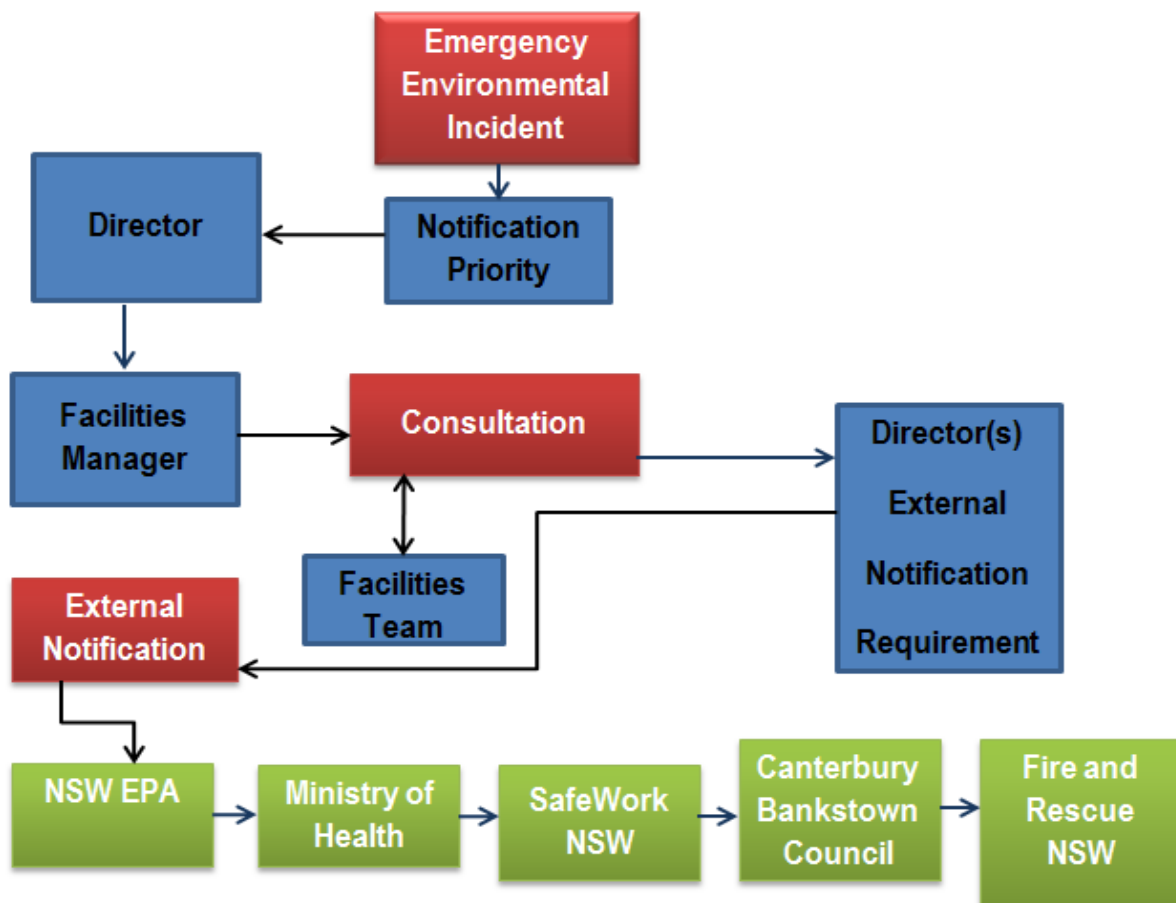
#### 1.4.2 Notification Protocol

If the incident clearly requires notification, (e.g. tank collapse with bund breached and liquid entering canal), the most senior person on site shall commence notification (Emergency Numbers).

In the event of any pollution incident, notify the Director immediately to determine if it meets the definition of the attached protocol, as shown on the list of priority contacts in the table below. The Director will be the primary contact point for the authorities on site. If the Director is not present at the time of the incident, the National Facilities Manager shall immediately contact a second Director who will notify all remaining authorities immediately including the EPA.

The schematic diagram below provides the flow process for incident response and notification protocols.

### ENVIRONMENTAL EMERGENCY PROTOCOL



Note: The table below lists the company contacts in order of priority. In the event of a company environmental emergency, staff shall contact priority 1 & if not successful, then contact priority 2 & so on.

### Bituminous Products 24hour Contact Details

Priority of Contacts	Position	Name	Work Number	After Hours
1	Director	Bevan Ford	02 9772 4433	0434 601 934
2	Facilities Manager	Roger Rich	02 9772 4433	0401 780 425
3	Maintenance Coordinator NSW	Glenn Brayley	02 9772 4433	0435 958 529
4	Director	Simon Ashley	02 9772 4433	0448 200 605



### 1.4.3 Contact Details

This section complies to the Regulation, Clause 98C (1) (g) and (h)

NSW sites licensed with the EPA are required to immediately notify each of the relevant authorities when material harm to the environment is caused or threatened.

All the below authorities must be notified not just the appropriate regulatory authority

1. Call 000 if the incident presents an immediate threat to human health or property. Fire and Rescue, the NSW Police and the NSW Ambulance are the first responders responsible for controlling and containing incidents.

2 If the incident does not require an initial combat agency, or once the 000 call has been made, notify the relevant authorities in the following order:

Order of Priority	Agency	Phone
1	NSW Environment Protection Authority	131 555
2	The Ministry of Health	9515 6111 (Ask For Public Health Officer on call)
3	Safework NSW	13 10 50
4	Canterbury Bankstown Council	(02) 9707 9999 (office hours)
5	Fire and Rescue NSW	1300 729 579

## 1.5 Environmental and Safety Aspects and Impacts

### 1.5.1 General

The Bituminous Products Plant at Revesby has implemented and maintained;

- Pollution Incident Response Management Plan (PIRMP)
- Site Emergency Response Plan (SERP)

Risk Assessments and subsequent controls listed below, cover both the potential for safety and environmental incidents and are in accordance with the clauses outlined in the POELA Act)

Clause 98C (1) (a) and 1(b): Description and likelihood of hazards & associated risks in accordance to the Environmental and Safety Aspects and Impacts Register

Clause 98C (1) (c): Pre-emptive actions or "controls" for risks have been implemented in accordance to the Environmental and Safety Aspects and Impacts Register.



### 1.5.2 Environmental and Safety Aspects and Impacts Register

Aspect / Hazard	Impact / Risk	Potential Business Unit Risk	Current Business Unit Controls	Current Business Unit Risk
<b>Fire &amp; Explosion</b>	Illness, injury, fatality, corporate reputation, corporate prosecution, individual prosecution, ability to operate.	<b>8</b>	<ul style="list-style-type: none"> <li>• Environmental Safety Aspects &amp; Impacts Register</li> <li>• SEQMS, <ul style="list-style-type: none"> <li>○ SOP- Fire Prevention</li> <li>○ LPG Filling Training.</li> <li>○ Monthly Reporting – KPI,</li> <li>○ Workplace Design and Layout,</li> <li>○ JSEAs</li> <li>○ Site Inductions</li> <li>○ Uniform policy and procedure.</li> </ul> </li> <li>• SOP Hazardous Zones Classification &amp; Risk assessment.</li> <li>• Fire risk assessment completed.</li> <li>• Designated smoking areas on site - risk assessment completed.</li> <li>• Procedures - Work Instructions –Work Permits: Solvent Transfers.</li> <li>• Hot work on site - Permits</li> <li>• Hose register</li> <li>• Equipment Registers (Test &amp; Inspection Program-preventative maintenance).</li> <li>• CO2 cylinders – Suppression system on U-Mixers.</li> <li>• Administrative controls in place – Induction, Contractor Management Procedures, Signage, Emergency Management Plan. Evacuation maps completed at emergency exits.</li> <li>• Training – DG training completed for operators.</li> <li>• Risk Management, Emergency awareness, emergency control and fire fighting training.</li> <li>• Safework NSW DG notification &amp; license.</li> <li>• Forklifts used in hazardous zones (spark arrest system -wet scrubber/ no electricals).</li> </ul>	<b>4</b>

			<ul style="list-style-type: none"> <li>• Annual Fire Statement Certificate completed &amp; displayed.</li> <li>• Emergency manifest completed &amp; stored within manifest cabinets.</li> <li>• Evacuation rehearsals completed as per Business Unit Annual Plan.</li> <li>• Fire Extinguisher Service Provider.</li> <li>• Fire Extinguisher Training.</li> </ul>	
<b>Fire &amp; Explosion</b>	Toxic fumes, smoke, air pollution, greenhouse emissions,	<b>6</b>	<ul style="list-style-type: none"> <li>• Environmental Safety Aspects &amp; Impacts Register</li> <li>• Environmental SOPs</li> <li>• Environmental Plan</li> <li>• SOP Hazardous Zones Classification &amp; Risk assessment.</li> <li>• Fire risk assessment completed.</li> <li>• Designated smoking areas on site - risk assessment completed.</li> <li>• Procedures - Work Instructions –Work Permits: Solvent Transfers.</li> <li>• Hot work on site - Permits</li> <li>• Hose register</li> <li>• Equipment Registers (Test &amp; Inspection Program-preventative maintenance).</li> <li>• CO2 cylinders – Suppression system on U-Mixers.</li> <li>• Administrative controls in place – Induction, Contractor Management Procedures, Signage, Emergency Management Plan. Evacuation maps completed at emergency exits.</li> <li>• Training – DG training completed for operators.</li> <li>• Risk Management, Emergency awareness, emergency control and fire fighting training.</li> <li>• Safework NSW DG notification &amp; license.</li> <li>• Annual Fire Statement Certificate completed &amp; displayed.</li> <li>• Safety Plan</li> <li>• Emergency manifest completed &amp; stored within manifest cabinets.</li> <li>• Evacuation rehearsals completed as per Business Unit Annual Plan.</li> <li>• Fire Extinguisher Service Provider.</li> <li>• Fire Extinguisher Training.</li> </ul>	<b>2</b>

<b>Physical – Hot/Cold (burns)</b>	Exhaustion, dehydration, illness, physical harm, burns, fatality, corporate prosecution	6	<ul style="list-style-type: none"> <li>• SOPs and WIs.</li> <li>• Safety Training Records &amp; Plans.</li> <li>• Workplace design and layout.</li> <li>• JSEAs - Hot surfaces &amp; products at elevated temperatures</li> <li>• Site Induction.</li> <li>• Uniform policy and procedure.</li> <li>• PPE Policy</li> <li>• Hazard signage for hot surfaces.</li> <li>• SOP - Emergency Management.</li> <li>• Trained "First Aiders.</li> <li>• Bitumen Burns Cards.</li> <li>• Emergency Showers.</li> <li>• Platform ladder utilised for safe completion of bitumen sampling.</li> <li>• Training: Australian Asphalt Pavement Association - Working Safely with Bitumen Course.</li> <li>• Rest breaks, provision of amenities and climate control devices.</li> <li>• Allegro neck ties used in summer (mitigate heat stress).</li> <li>• Investigate climatic cooling aids – ice vests. Heat stress to be addressed in all JSEAs. Air conditioners added to test and inspection program.</li> <li>• WI &amp; JSEAs for gas cylinders. Training for gas decanting. Signage and instructions displayed for gas cylinders -chained.</li> <li>• Toolbox talk meeting presentations (Safetycare DVD on Heat illness) completed</li> </ul>	2
<b>Chemical - exposure</b>	Illness, injury, fatality, corporate reputation, corporate prosecution, individual prosecution, ability to operate	8	<ul style="list-style-type: none"> <li>• Chemical risk assessments for hazardous substances completed.</li> <li>• Chemical/hazardous substances management training conducted.</li> <li>• SDS available on Public Drive. Copies available in Production &amp; Administration Offices.</li> <li>• Dust and Organic Chemical respirators available and training provided,</li> <li>• Storage of DG on site is as per AS 1940 (Storage &amp; Handling of Flammable &amp; Combustible Liquids) &amp; AS3833 (Storage &amp; Handling of Dangerous Goods, in Packages and Intermediate Bulk Containers</li> </ul>	4

			<ul style="list-style-type: none"> <li>Vapour recovery system to reduce VOC emissions (wet scrubber). Dust extraction system.</li> <li>Stack Testing Monitoring as per license conditions.</li> </ul>	
<b>Emissions to water (anything that changes the biological, chemical or physical nature of the receiving water, including water pollution, sediment, heat, salinity, etc.)</b>	Water pollution, aquatic ecosystem degradation, chronic and acute human, fauna & flora impact, contaminated potable water and food supply, corporate reputation, corporate prosecution, individual prosecution, inability to operate, license conditions, share price, general environmental and social impacts, human health, community aesthetics	8	<ul style="list-style-type: none"> <li>Oil / Water separator - closed system on Site 33.</li> <li>No trade waste agreement in place –Recycling Service Providers dispose of waste in tanks.</li> <li>Site is fully bunded including tanks &amp; processing vessels. Bunding regularly inspected/ maintained (operator's checklist &amp; workplace inspection).</li> <li>Spill kits located around site.</li> <li>Bunding installed for dosing chemicals for both cooling towers. Stainless steel fittings installed on cooling tower</li> <li>SOP - Stormwater Management Plan.</li> </ul>	4
<b>Emissions to Air (including climate change gases, ozone depleting gases, dust, smogs, heat, vapour, etc.). Unburnt hydrocarbon causing odour emissions.</b>	Air Pollution; ozone depletion, climate change, smog, acute and chronic impact on humans and natural fauna & flora, nuisance complaints, corporate reputation, corporate prosecution, individual prosecution, inability to operate, license conditions, share price, general environmental and social impacts	8	<ul style="list-style-type: none"> <li>License/ Consent Conditions,</li> <li>NPI Reporting and Auditing.</li> <li>Annual Emissions Testing</li> <li>Augers are based on closed system which reduce the air emissions during manufacture.</li> <li>Vapour recovery system when tanker loading via wet scrubber.</li> <li>Furnace interlocked with blower plant to operate only at temperature exceeding 750°C.</li> </ul>	4
<b>Hazardous substance leak/spill</b>	Land, air and/or water contamination, local ecosystem destruction, corporate reputation, corporate prosecution, individual prosecution, share price, capital cost for remediation, human	8	<ul style="list-style-type: none"> <li>Spill Response Training (Spill Station),</li> <li>Spill kits in place.</li> <li>Site bunded.</li> <li>High level alarms fitted to storage tanks.</li> <li>Site Emergency Response Plan</li> <li>Pollution Incident Management Response Plan</li> </ul>	4

	health, fire & explosion, general environmental and social impacts			
<b>Mechanical – fixed plant</b>	Physical harm, property damage, fatality, corporate reputation, corporate prosecution, individual prosecution, ability to operate	<b>8</b>	<ul style="list-style-type: none"> <li>• Equipment register - Test &amp; Inspection Program.</li> <li>• Mechanical qualified person employed on site in maintenance role.</li> <li>• Electrical qualified contractors employed to maintain electrical equipment.</li> <li>• WIs revised to include operations pre-start checklists.</li> <li>• Guarding audit completed.</li> <li>• Work permit/ Isolation training provided.</li> </ul>	<b>4</b>
<b>Potential - body falls, slips, trips</b>	Physical harm	<b>4</b>	<ul style="list-style-type: none"> <li>• Housekeeping</li> <li>• WI and JSEAs</li> <li>• Periodic inspection of ladders.</li> <li>• Uneven areas (including nosing) highlighted on platforms &amp; stairs (lab &amp; plant).</li> </ul>	<b>2</b>
<b>Contractors &amp; Visitors</b>	Physical harm, fatality, corporate reputation, corporate prosecution, individual prosecution	<b>4</b>	<ul style="list-style-type: none"> <li>• Insurance policies and audits implemented.</li> <li>• Contractors Site Inductions</li> <li>• Contractors &amp; Visitors Sign in book.</li> <li>• Work permit system utilised for contractors completing high risk activities on site – JSEAs.</li> </ul>	<b>2</b>
<b>Pedestrian &amp; Vehicle Interaction</b>	Injury, fatality, corporate reputation, corporate prosecution, individual prosecution Injury, fatality, corporate reputation, corporate prosecution, individual prosecution	<b>4</b>	<ul style="list-style-type: none"> <li>• Restricted access to site-</li> <li>• Site induction for Employees and Contractors in operational areas.</li> <li>• Speed limit signage in place (10km).</li> <li>• Tankers reverse as per AS 1940/ ADG Code 7.</li> <li>• Speed humps and signage in place.</li> <li>• Contractors &amp; Visitors Sign in book.</li> <li>• Visitors escorted while on site.</li> <li>• Designated walkways marked.</li> <li>• Formal traffic management risk assessment/ plan.</li> <li>• RTA traffic control courses provided to relevant staff for directing tankers/trucks onto/from site.</li> <li>• Forklift pre-start checklists completed.</li> </ul>	<b>2</b>

			<ul style="list-style-type: none"> <li>Forklifts maintained by trade qualified contractor according to manufacturer's recommendations</li> </ul>	
<b>Manual Handling</b>	Physical harm	<b>8</b>	<ul style="list-style-type: none"> <li>Training on Manual Handling provided</li> <li>JSEAs include manual handling risks where relevant.</li> <li>Forklifts/lifting aids used for most manual handling tasks on site. Scaffolds/man-lift cage for maintenance tasks.</li> <li>Manual handling risk assessment. Ergonomics - valves at waist height.</li> </ul>	<b>4</b>
<b>Work at heights (fall from one level to another)</b>	Illness, injury, fatality, corporate reputation, corporate prosecution, individual prosecution, ability to operate	<b>8</b>	<ul style="list-style-type: none"> <li>Fall arrest or prevention systems in place on client tanker trailers.</li> <li>Work Safely at Heights training provided to relevant staff.</li> <li>Rental and erection of scaffolding sourced from qualified service providers.</li> <li>JSEA Man-Lift Cage</li> <li>Work platforms comply with AS 1657.</li> <li>Fixed ladders on plant main platform only used for emergency exit.</li> <li>Periodic inspection of ladders.</li> <li>Lifting gear register (Harnesses/Rescue Kit).</li> </ul>	<b>4</b>

### 1.5.3 Inventory of Pollutants

This section complies to the Regulation, Clause 98C (1) (d) and (e)

**Table 1: Site Chemical Manifest**

**Note:** Tanks 32 - 36 & 43 – 46 along creek contain waste water.  
Site surface water is fully contained with all rain water collected into Waste Water tanks (3 x 18KL).

#### 1.1.1 Form B - Site Chemical Substances List

BUSINESS: Bituminous Products PTY LTD – Bitumen Manufacturing Plant									DATE: 17/08/2021		
ADDRESS: 33 Violet St Revesby									CONTACT: Site 24-hour contact <b>Bevan Ford</b> 0434 601 934		
Location of Substance  Depot No. Bulk Tank No.		Proper Shipping Name	UN	DG Class	PG	Hazardous	MSDS (Yes/No)	Volume Typical	Tank Dia' (metres)	Tank / Vessel Size (litres)	Risk Assessment conducted (Yes/No)
Depot 1	Tank 14	Cutback Bitumen	1999	3	III	Y	Y	10,000		36,000	Y
	Tank 15	Kerosene	1863	3	NA	Y	Y	51,700		51,700	Y

		(Aviation Fuel)									
	Tank 16	Turpentine Substitute	1300	3	III	Y	Y	51,700		51,700	Y
	Tank 17	Xylenes	1307	3	III	Y	Y	51,700		51,700	Y
	Tank 18	Diesel Sub	1223	3	III	Y	Y	51,700		51,700	Y
	Tank 19	E6080 Combining Oil				N	Y	28,000		30,000	Y
	U-Shaped Mixer M5	Elevated Temperature Liquid	3257	9	III	N	Y	25,000		29,000	Y
Depot 2	Packaged Products	Tars, Liquid	1999	3	II	Y	Y	50,000		NA	Y
Depot 3	IBC/ 205 litre drums	Amines, Liquid,	2735	8	II & III	Y	Y	30,000		NA	Y



		Corrosive, NOS									
	Tank 25	Amines, Liquid, Corrosive, NOS	2735	8	III	Y	Y	10,000		15,000	Y
	U-Shaped Mixer N0: M6	Elevated Temperature Liquid, NOS	3257	9	III	N	Y	6,000		8,000	Y
	U-Shaped Mixer N0:22	Elevated Temperature Liquid, NOS	3257	9	III	N	Y	600		800	Y
Depot 4	U-Shaped Mixer N0: M1	Elevated Temperature Liquid, NOS	3257	9	III	N	Y	25,000		29,000	Y
	U-Shaped Mixer N0: M2	Elevated Temperature Liquid, NOS	3257	9	III	N	Y	25,000		29,000	Y
	U-Shaped Mixer N0: M3	Elevated Temperature Liquid	3257	9	III	N	Y	25,000		29,000	Y

	U-Shaped Mixer N0: M4	Elevated Temperature Liquid, NOS	3257	9	III	N	Y	25,000		29,000	Y
	Tank 5 2.8M DIA	Elevated Temperature Liquid, NOS	3257	9	III	N	Y	46,000		50,000	Y
	Tank 6	Pre-coat (C1)			CAT 4	N	Y	50,000		55,000	Y
Depot 4 continued	Tank 7	CR150 Combining Oil (C2)				N	Y	51,700		55,000	Y
	Tank 8 2.8M DIA	Pre-coat (C1)		3	CAT 4	N	Y	54,500		60,000	Y
	Tank 9 2.8M DIA	Elevated Temperature Liquid, NOS	3257	9	III	N	Y	20,000		25,000	Y
	Tank 10	Dry Fuel Oil (C2)				Y	Y	20,000		28,000	Y

	Tank 11	Wet Fuel Oil (C2)				Y	Y	51,700		55,000	Y
	Tank 12	Diesel Fuel (C1)			CAT 4	Y	Y	51,700		55,000	Y
	Tank 24	Elevated Temperature Liquid, NOS	3257	9	III	N	Y	50,000		76,000	Y
	Tank 20	Diesel (C2)			NA	Y	Y	51,700		55,000	Y
	Tank 28	Dry Fuel Oil (C2)			NA	Y	Y	51,700		55,000	Y

Location of Substance		Proper Shipping Name	UN	DG Class	PG	Hazardous	MSDS (Yes/No)	Volume Typical	EPG No.	Tank / Vessel Size (litres)	Risk Assessment conducted (Yes/No)
Depot No.											
Bulk Tank No.											
Gas Bottle Storage	LPG	Petroleum Gases, Liquefied	1075	2.1	NA	Y	Y	2 x 500		500	Y
	Oxygen	Oxygen, compressed	1072	2.2/5.1	NA	Y	Y	2 x 50		50	Y
	Acetylene	Acetylene, dissolved	1001	2.1	NA	Y	Y	2 x 50		50	Y
Gas Bottle Storage cont.	Argon	Argon, compressed	1006	2.2	NA	Y	Y	2 x 50		100	Y
	Ammonia	Ammonia, anhydrous	1005	2.3/8	NA	Y	Y	2 x 34		34	Y

### 1.5.4 Safety Equipment

This section complies to Regulation Clause 98C (1) (f)

Fire fighting equipment on site includes hose reels & extinguishers (CO2 & Dry Chemical Powder). There is a hose reel on site 33 with provision for foam.

Spill kits are located around the site with provision to clean up spills entering the canal (booms) which runs between site #33 & neighbouring businesses.

Plant #33 captures rainwater via underground collection points, gross pollutant traps and storm water collection system and SEPA separator.

### 1.5.5 Communicating with Neighbours and the Local Community

This section complies to Regulation Clause 98C (1) (i)

- Bituminous Products PTY LTD comprises an office, storage buildings and two manufacturing plants.
- The site is located in an industrial area with no schools or hospitals in the immediate area.
- Therefore, the only incident which would impact on the local neighbours, would be a fire/explosion in the operations area on site 33.
- As all tanks are located in bunded areas and the stormwater drains are fitted with emergency shut off valves, the likelihood of a significant spill to stormwater is minimal. Tanks are also fitted with high level alarms.
- In the event of an uncontrollable spill due to leak or fire water, the liquid would enter the stormwater canal where it would not affect human health.
- The liquid would be contained in the area of the canal between both sites by spill kits located at either end of site 33.
- In the event of a fire the decision to notify to the neighbours would be made in conjunction with the Fire Brigade based on risk, severity and wind direction. The local fire brigade is located in River Road (less than 5 km).

**Immediate neighbours to be notified are as follows and their location is shown in the maps below.**

**Contact numbers for the neighbours are:**

Neighbours Business name	Contact Number
MPC Mastering Powder Coatings	9607 1950
Intasys	9772 1300
Vulcan Advanced Engineering	9792 2306
ER Curtain	9773 0539
Bingo Recycling	1300 424 646

### 1.5.6 Minimising Harm to Persons on the Premises

This section complies to Regulation Clause 98C (1) (j)

The site has established Emergency Response Plans, adequate fire protection in the form of fire extinguishers & hose reels (tested six monthly). There is also provision for foam on site #33 which would be used in the event of a large spill event from hydrocarbons from a tank.

There is an audible alarm system activated by manual call points tested weekly and evacuations drills carried out at least annually.

All staff are trained in fire fighting –extinguisher (CO2 & Dry Chemical powder) & the plant operators conduct hose drills with assistance from our fire service provider.

#### Evacuation

- The fire Alarm is also the evacuation alarm.
- Regardless of the situation if the fire alarm is activated via manual call point, evacuation must take place and the most senior person on site takes responsibility.
- If a clear danger exists, emergency services will be called by the emergency coordinator (Chief Warden).
- The Chief Warden or Area Warden may reassess the situation for immediate actions to take place.
- If the designated evacuation point becomes endangered, or the evacuees need to remain outside the premises for an extended period, all personnel will be relocated to a suitable point at the direction of the emergency coordinator.

#### Head Count

- After evacuation, all persons on site including visitors and contractors shall assemble at the evacuation point.
- The evacuation or assembly point is located at the gate of the front car park.
- Emergency response staff will conduct a roll call to ensure all persons are accounted for including visitors and contractors.
- Missing persons shall be advised to the emergency coordinator, who will then advise the emergency services.
- No personnel shall undertake search and rescue for missing persons in endangered areas.

#### Adjacent Areas

- The occupants of adjacent premises are to be advised if endangered by the emergency.
- Evacuation of adjacent premises is the responsibility of the individual companies and the emergency services.

#### Re-Entry

- Re-entry to the site will not take place until advised by the emergency services to do so. This will be relayed to all personnel by the emergency coordinator (Chief Warden).

#### Review

- The evacuation plan shall be reviewed:
  - a. Following any emergency or training exercise that exposes any short comings.
  - b. Following any significant changes to the layout or operations.
  - c. At least once annually

### 1.5.7 Maps

This section complies to Regulation Clause 98C (1) (k)

The maps shown below identify premises occupied by Bituminous Products Pty Ltd & occupied premises relative to neighbouring facilities.

#### **33 Violet Street Revesby**

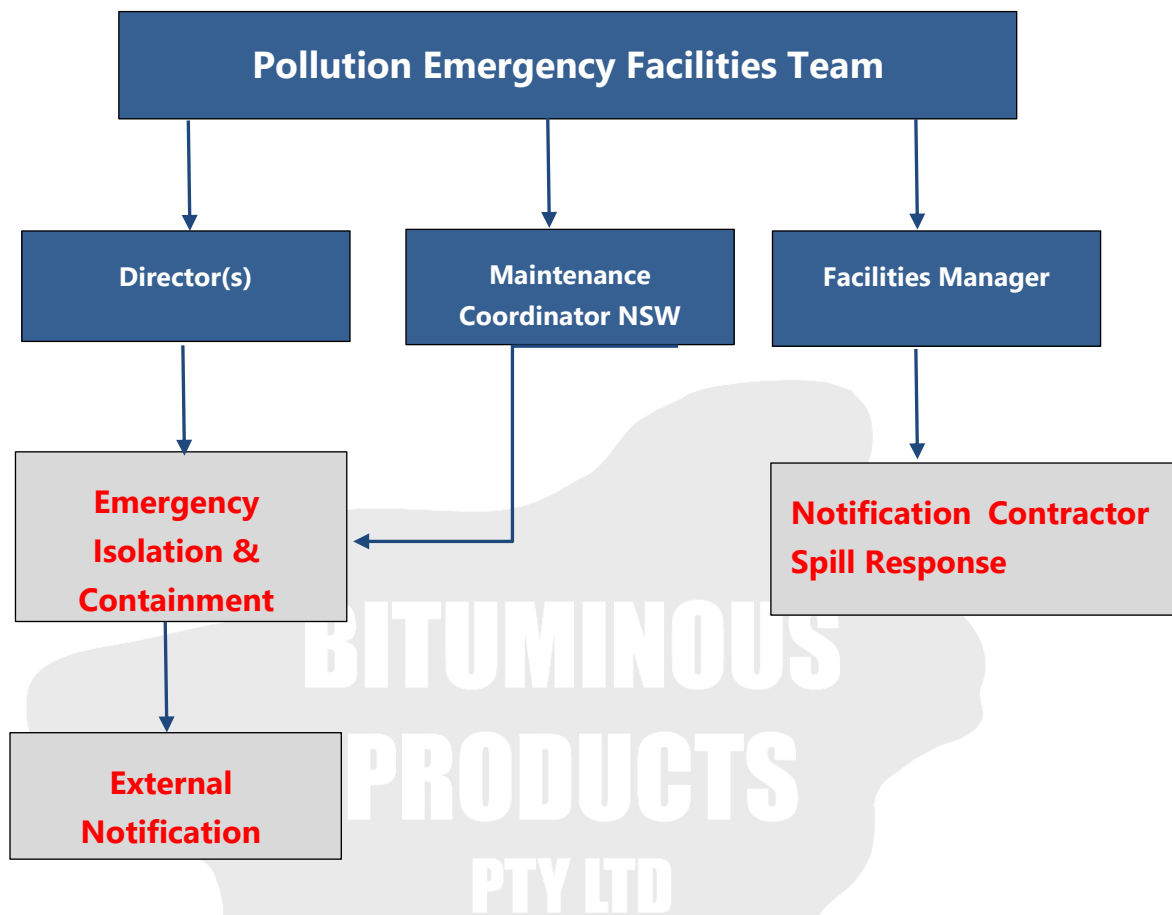








### 1.5.8 Actions to be Taken Immediately After a Pollution Incident



This section complies to Regulation Clause 98C (1) (i)

#### A) Spills

When safe to do so:

##### Isolation and containment of spill

- Raise alarm, ensuring that stormwater bund valves are closed
- Ensure Gross Pollutant Pit pumps are turned off.
- Stop the source of the spill;
- In all situations the priority is to isolate the spill using the appropriate spill containment equipment from appropriate spill kits;
- Refer to the Section 3.3.3 for the Hazchem code for Emergency Procedures
- During the isolation and containment, appropriate personal protective equipment is to be worn to handle the substance;
- Ensure the scene has been secured especially if the spill is located close to sensitive receiving environments.

##### Off-site spill recovery procedure

- In the event the liquid leaves the site and enters stormwater, refer to **Map C Below** for the location of offsite containment areas.

##### Clean up and disposal of spills

- All spills will be cleaned up using the appropriate material such as a spill kit, absorbent rags, or sand. Absorbent products are placed in an empty drum and processed with other drums of absorbent waste awaiting disposal.



The hosing down of spill areas shall be avoided to prevent run-off to the soil, stormwater, or sewerage systems.

**B) Air pollution** (Fire or Explosion)

- Notify relevant management immediately and emergency services if required.
- In the event of an evacuation due to fire or explosion, emergency evacuation procedures are to be followed and immediate neighbours notified by direct contact or phone.
- If safe to do so the plant will be shut down according to procedures set in Appendix A

**BITUMINOUS  
PRODUCTS  
PTY LTD**

**Map C: Plant Layout**





### 1.5.9 Staff Training and Testing Plans

This section complies to Regulation Clause 98C (1) (e), (m), (n), (o), (p)

#### Staff training [clause 98C (1) (m, n, o, p)]

Staff training is maintained according to the site training register and personnel records.

Bituminous Products Pty Ltd requires all sites to undergo a mock Emergency Evacuation Exercise at least every 12 months as well as a mock scenario via "desktop "on spill response". Training in Emergency Awareness is provided to new employee's when there are changes to plant infrastructure and refresher training is provided every 4 years. Emergency control training is to be completed for wardens and also refreshed every 3 years. Training in firefighting equipment is scheduled at least every 3 years.

This plan is incorporated into that exercise; records of attendance are kept on the sites training records.

Spill response training is also completed at least annually with a scenario incorporated to test emergency preparedness in the event of a spill.

Training	Training Organisation (RTO)	Last Completed
Emergency Awareness	Internal	As per Training Matrix
Emergency Control	Internal	As per Training Matrix
Fire Fighting	Extinguisher Services Pty Ltd	Due in 3Q 2021
Evacuation Rehearsal	Internal (meeting debrief of ERT)	1/09/2020
Spill Response	Internal (spill station training package)	<b>As per training matrix</b>
PIRMP Plan	Internal (scenario-table top exercise) *	13/10/2020
First Aid	New First Aid	As per training matrix

\* To be carried out by 1 senior manager, 1 other staff member and 1 worker, prior to the annual revision of this plan.

### 1.6 Forms & Records

The National Facilities Manager maintains records of the potential emergency scenarios that our organisation is prepared for, the potential environmental impacts associated with each scenario, and the procedures established to minimise these impacts. All documentation and records generated by the Control of Emergency Situations procedure are retained and managed in accordance with the Control of Documented Information procedure.

Title & Description
Emergency Preparedness Response Matrix
Emergency Equipment Log
Incident Report Form

## Appendix A: Pollution Notification Protocol

Address 33, Violet Street, Revesby

EPA Site Licence Number: 5267

### PROTOCOL FOR INDUSTRY NOTIFICATION OF POLLUTION INCIDENTS

**Effective 6 February 2012** all NSW sites licensed with the EPA are required to **immediately notify each** of the relevant authorities when material harm to the environment is caused or threatened.

**All authorities listed below must be notified not just the appropriate regulatory authority**

**1. Call 000 if the incident presents an immediate threat to human health or property.** Fire and Rescue, the NSW Police and the NSW Ambulance are the first responders responsible for controlling and containing incidents.

2. If the incident does not require an initial combat agency, or once the 000 call has been made, notify the relevant authorities in the following order:

Order of Priority	Agency	Phone
1	NSW Environment Protection Authority	131 555
2	The Ministry of Health	9515 6111 (Ask For Public Health Officer on call)
3	Safework NSW	13 10 50
4	Canterbury Bankstown Council	(02) 9707 9999 (office hours)
5	Fire and Rescue NSW	1300 729 579
6	Cleanaway Spills	1800 774 557

Neighbours Business name	Contact Number
MPC Mastering Powder Coatings	9607 1950
Intasys	9772 1300
Vulcan Advanced Engineering	9792 2306
ER Curtain	9773 0539
Bingo Recycling	1300 424 646

